

# PRIVATE AIR

---

## LUXURY HOMES

Volume 5 | Issue 2



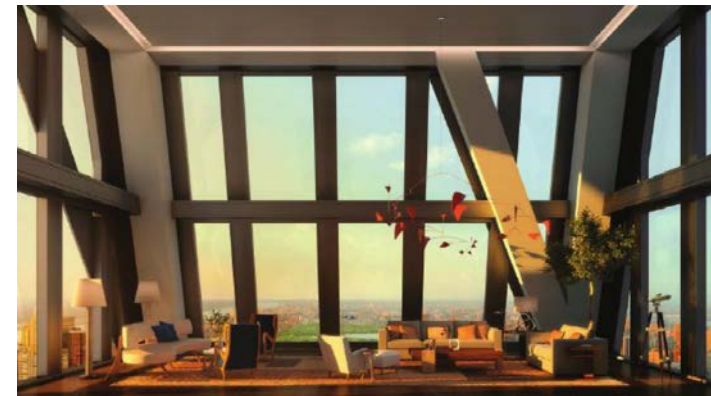
53W53 was designed by Paris-based Pritzker Prize-winning architect Jean Nouvel. His iconic architectural design will transform the Manhattan skyline.

## ARTFUL LIVING

— MANHATTAN , NEW YORK —

With soaring Central Park and Midtown Manhattan views, the exquisite condominium tower rising above the Museum of Modern Art (MoMA) has been in the making for more than a decade. Now, you have the chance to own a residence in this Jean Nouvel-designed slice of New York skyline heaven.

By: Tricia Drevets



Sales have begun for 139 residential units in 53W53, the graceful tower located at 53 W. 53rd St. With its distinctive sculptural exterior created by Pritzker Prize-winning architect, Jean Nouvel, the 1,050-foot high-rise offers unrivaled views of the Empire State Building and of Central Park.

The building's detailed, luxurious residences are designed by respected interior architect Thierry Despont and range in size from one- to five-bedrooms, including full-floor residences as well as duplex penthouses with private elevators. Prices range from \$3 million to over \$70 million, not including a still-to-hit-the

market penthouse in the clouds.

And what amenities come with that price tag? Well, in addition to its superb location near Central Park and Fifth Avenue, 53W53 offers panoramic views, a wellness center with a lap pool and a cold-plunge pool, a private theater, children's playroom, a library, an oenology suite for wine tasting, temperature-controlled wine storage vaults, private dining service and full concierge service. In addition, 53W53 will be integrated into the world-class MoMA. Three new museum galleries will connect the building with the museum's other existing exhibition spaces.

Interiors have been designed by interior architect Thierry Despont, known for his mastery of exceptional private residences and some of the most luxurious hotels in the world.







Additionally, homeowners will be deemed members of MoMA, and the building will have the privilege to host private events in the museum's Sculpture Garden.

With a 24-hour staffed lobby, the building's two entrances – on 53rd and 54th Streets – offer discrete and secure access to and from the residences. The lobby itself exudes grace and charm with a soft palette of marble, alabaster, cerused oak, bronze and gold leaf.

Each residence features crafted, furniture-grade mahogany doors that are complemented by the custom-designed bronze hardware. Custom-designed kitchens feature Italian statuary classic marble backsplashes, countertops, and back-painted white glass cabinetry with polished-nickel detailing. Sub-Zero refrigerators/freezers and Miele ovens, low-profile cooktops and floor-to-ceiling windows make them perfect

for discriminating chefs.

Master bathrooms feature Noir Saint Laurent marble with Peruvian gold polished travertine on certain walls. Cast-iron soaking tubs and carved Verona limestone vanity sinks, polished nickel automated, adjustable height mirrors and LED sidelights make the bathrooms truly luxurious.

No two apartments will be the same – even those with the same floorplan -- as each one will be affected differently by the building's unique diagrid structure. Unlike many high-rise towers, each 53W53 apartment has small vent windows that can be opened to let in fresh air.

Pritzker Prize winning architect Nouvel's latest masterpiece will be completed in 2018. ✈

*For more information on residences and specific pricing details, visit [www.53w53.com](http://www.53w53.com).*