

# 21D

2,610 ft.<sup>2</sup> / 242.5 m<sup>2</sup>

2 Bedrooms  
2 Baths  
Powder Room

## Living Room

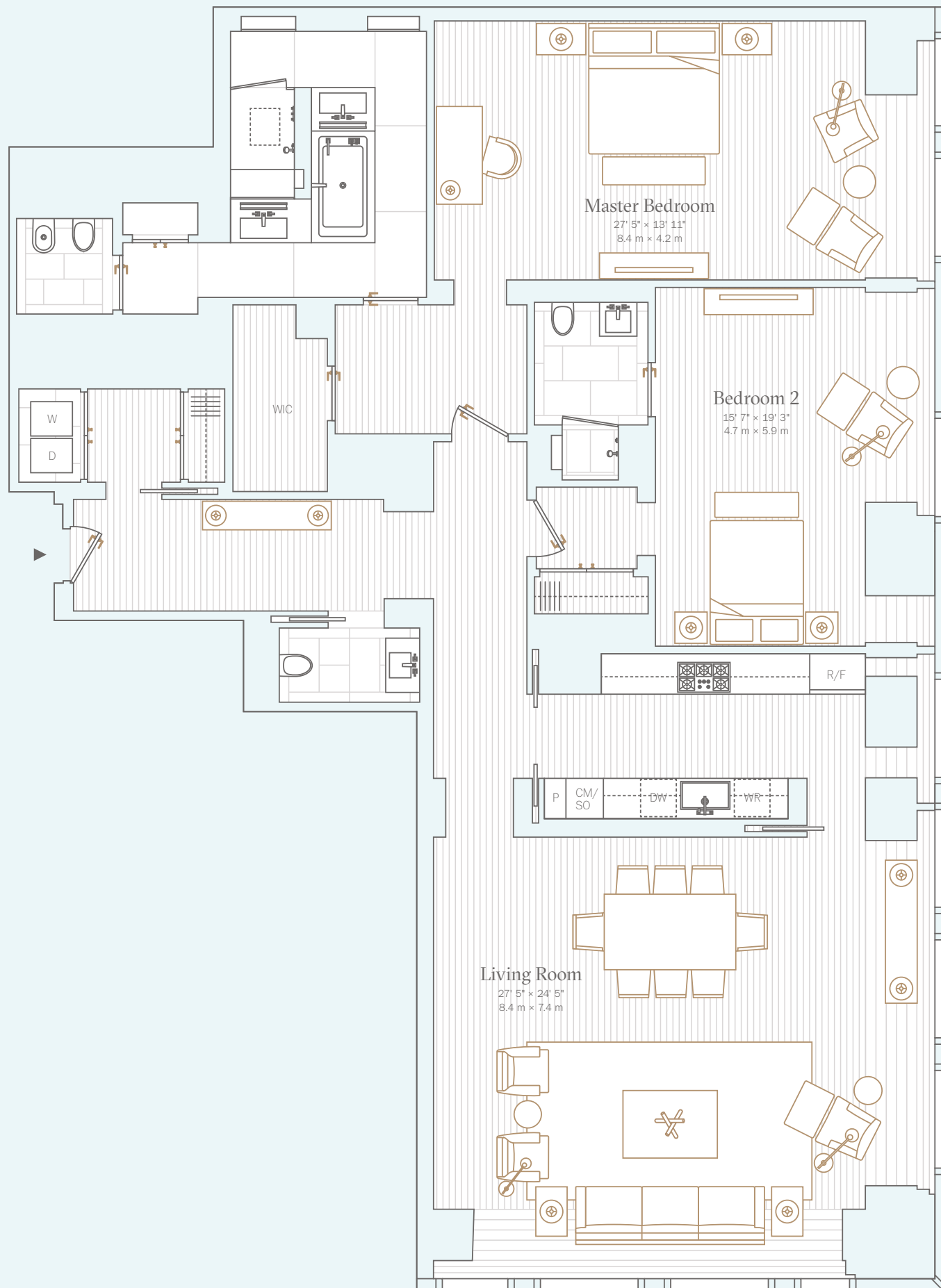
27' 5" x 24' 5"  
8.4m x 7.4m

## Master Bedroom

27' 5" x 13' 11"  
8.4m x 4.2m

## Bedroom 2

15' 7" x 19' 3"  
4.7m x 5.8m



## 53W53

Sales Gallery  
745 Fifth Avenue, Suite 601 / New York, NY 10151  
212 688 5300 / [53W53.com](http://53W53.com)

Hines / Pontiac Land Group / Goldman Sachs  
Exclusive Marketing & Sales Agent / Corcoran Sunshine Marketing Group



All dimensions and square footages are approximate and subject to normal construction variances and tolerances. Square footage exceeds the usable floor area. Units will not be offered furnished. Furniture layouts shown are for illustrative purposes only and are not coordinated with building systems. Reference should be made to the Description of Property set forth in Part II of the Offering Plan for information on lot line windows. Sponsor reserves the right to make changes in accordance with the terms of the Offering Plan. The complete offering terms are in an offering plan available from the sponsor. File No. CD14-0230. 53 West 53rd Street, NY, NY 10019. W2005 / Hines West Fifty-Third Realty, LLC c/o Hines Interests 345 Hudson Street, New York, NY 10014.

NOT TO SCALE

